

## PROJECT DATA

CONSTRUCTION STARTS MARCH 2018

OPENING IN FALL 2019

48 GENERAL AND SPECIALIZED INSTRUCTIONAL SPACES

SIZE - APPROX 142,000 SF

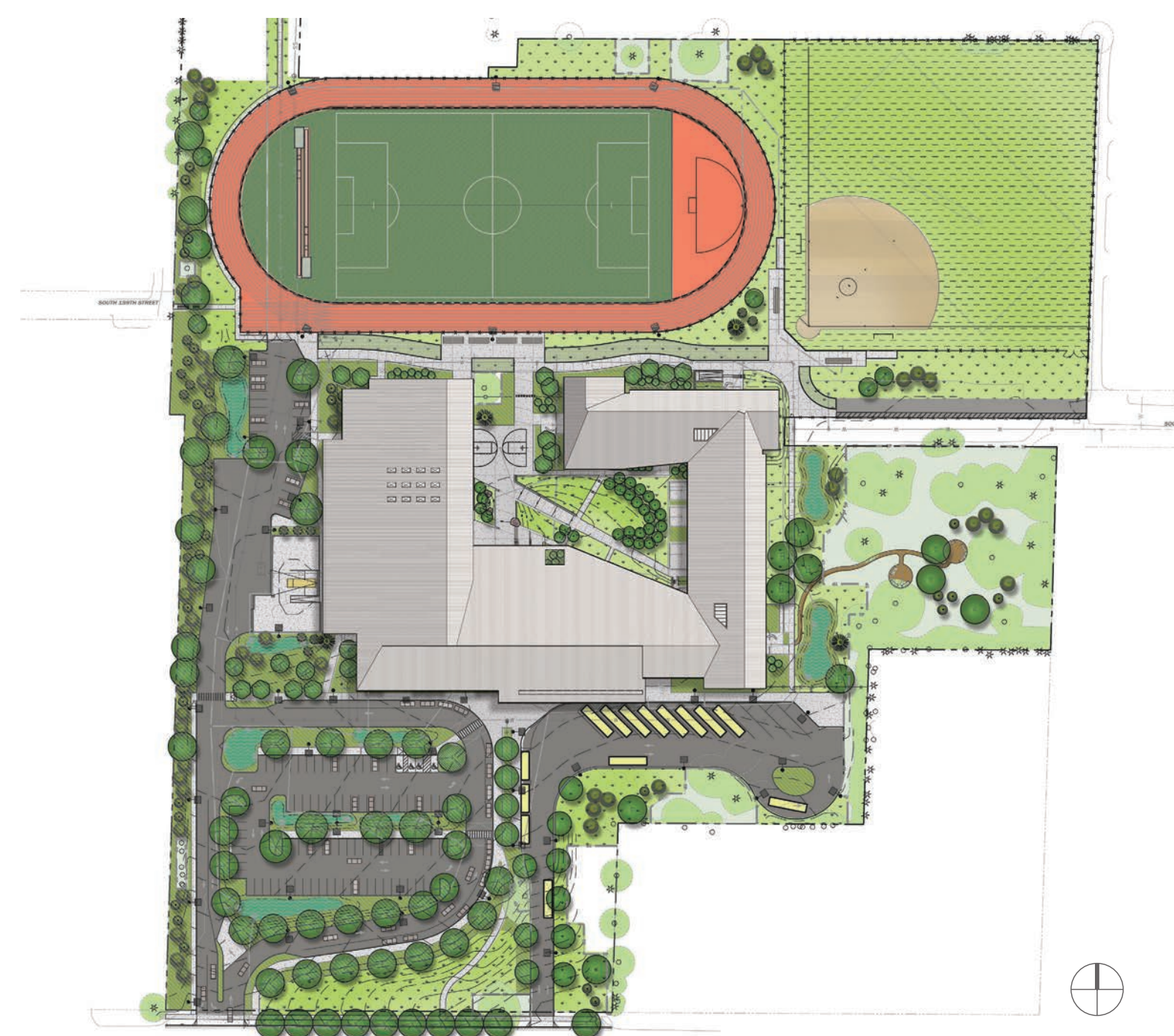


LEVEL 2



LEVEL 1

- |                       |                      |
|-----------------------|----------------------|
| 1. Admin / Counseling | 7. Library           |
| 2. Commons / Platform | 8. Music / Drama     |
| 3. Gymnasium          | 9. Art               |
| 4. Food Service       | 10. Science          |
| 5. Classroom          | 11. Building Support |
| 6. Tech Lab           |                      |



SITE PLAN



SW VIEW FROM DINING COMMONS



COURTYARD VIEW FROM FIELD

